



# M-5230-V6 Mustang V6 Dual Exhaust Kit INSTRUCTION SHEET

NO PART OF THIS DOCUMENT MAY BE REPRODUCED WITHOUT PRIOR AGREEMENT AND WRITTEN PERMISSION OF FORD RACING PERFORMANCE PARTS.

Please contact the Techline for the most current instruction information (800) FORD788.

**!!! PLEASE READ THE FOLLOWING INSTRUCTIONS CAREFULLY PRIOR TO INSTALLATION !!!**

## OVERVIEW:

The use of a floor hoist is recommended for this installation. If you do not have access to one, use a hydraulic floor jack and jack stands to raise the vehicle.

**!!! CAUTION: JACK STANDS MUST BE USED ON A LEVEL SURFACE AND BE SECURELY SEATED. FAILURE TO DO SO MAY RESULT IN PERSONAL INJURY OR VEHICLE DAMAGE !!!**

## KIT INCLUDES:

<u>Item #</u>	<u>Qty</u>	<u>Description</u>
1	1	M-5230-GTA Muffler Kit
2	1	RH Intermediate Pipe
3	1	LH Intermediate Pipe
4	4	X-Pipe Clamps
5	2	LH Brackets
6	2	Rear Fascia Trim and Fastening Hardware
7	1	V6 X-Pipe
8	2	Brackets Bolts

**NOTE:** Please check kit contents before starting work on the vehicle.

## INSTALLATION INSTRUCTIONS:

**!!! CAUTION: PERFORM THE FOLLOWING WORK ON A COLD VEHICLE ONLY !!!**

- STEP 1:** Remove negative cable from battery.
- STEP 2:** Raise vehicle and apply parking brake.
- STEP 3:** Loosen clamp at the rear of the Y-pipe assembly and on the muffler (use penetrating oil if necessary).

**Techline (800) FORD788**

Factory Ford shop manuals are available from Helm Publications, 1-800-782-4356

NO PART OF THIS DOCUMENT MAY BE REPRODUCED WITHOUT PRIOR AGREEMENT AND WRITTEN PERMISSION OF FORD RACING PERFORMANCE PARTS.

**STEP 4:** Use a screwdriver to lift retaining clip on clamp at rear of the Y-pipe and slide back (See Fig. 1).



Fig. 1

**STEP 5:** Remove pipe from muffler (cut pipe in front of the rear axle if ground clearance is an issue).

**STEP 6:** To remove muffler, spray penetrating oil on front inner hanger and pry rubber hanger free from the hook. Slide the muffler toward the front of vehicle to remove from the other hangers.

**STEP 7:** Place X-pipe on the Y-pipe assembly to determine cut location (See Fig. 2). Be sure to center the new X-pipe as best as possible to the center of the vehicle (See Fig. 3). Mark the end of the tube with tape (See Fig. 4). Measure back 1½ inches (40 mm) from the tape and mark the cut line with tape (See Fig. 5 & 6).



Fig. 2



Fig. 3



Fig. 4



Fig. 5



Fig. 6

**Techline (800) FORD788**

Factory Ford shop manuals are available from Helm Publications, 1-800-782-4356

NO PART OF THIS DOCUMENT MAY BE REPRODUCED WITHOUT PRIOR AGREEMENT AND WRITTEN PERMISSION OF FORD RACING PERFORMANCE PARTS.

**STEP 8:** Cut the Y-pipe and de-burr the inside and outside of the pipe (See Fig. 7 & 8).



Fig. 7



Fig. 8

**STEP 9:** Remove the right hand Y-pipe tube and loosen the left hand (be sure to unplug sensor on right hand side before removing).

**STEP 10:** Use penetrating oil to lubricate the end of the Y-pipe tubes. Slide the X-pipe over the left hand Y-pipe tube and then insert the right hand tube into the X-pipe and reattach it to the exhaust manifold installing nuts hand tight. Re-connect the sensor connector (See Fig. 9).



Fig. 9

**STEP 11:** Tighten pipe to manifold nuts.

**STEP 12:** Install left hand muffler hangers. Tap bosses using M8 X 1.25 tap and then install hanger with M8 bolts.

**Techline (800) FORD788**

Factory Ford shop manuals are available from Helm Publications, 1-800-782-4356



## M-5230-V6 Mustang V6 Dual Exhaust Kit INSTRUCTION SHEET

NO PART OF THIS DOCUMENT MAY BE REPRODUCED WITHOUT PRIOR AGREEMENT AND WRITTEN PERMISSION OF FORD RACING PERFORMANCE PARTS.

**STEP 13:** Place supplied template on rear fascia as shown and trace where cut will be (See Fig. 10).

**NOTE:** Tape off area to be cut to protect the painted surfaces.



Fig. 10

**STEP 14:** Cut fascia along traced lines and drill holes with a 3/16" drill bit.

**STEP 15:** Install fascia outlets with supplied hardware (See Fig. 11).



Fig. 11

**STEP 16:** Install mufflers. Place the band clamp on the inlet to the muffler.

**STEP 17:** Install underbody pipes. Place band clamps on the inlet of the underbody pipes. Insert into mufflers.

**Techline (800) FORD788**

Factory Ford shop manuals are available from Helm Publications, 1-800-782-4356



## M-5230-V6 Mustang V6 Dual Exhaust Kit INSTRUCTION SHEET

NO PART OF THIS DOCUMENT MAY BE REPRODUCED WITHOUT PRIOR AGREEMENT AND WRITTEN PERMISSION OF FORD RACING PERFORMANCE PARTS.

**STEP 18:** Tighten all connections, etc. (See Fig. 12). Torque clamps to 40 lb-ft / 54 nm.



Fig. 12

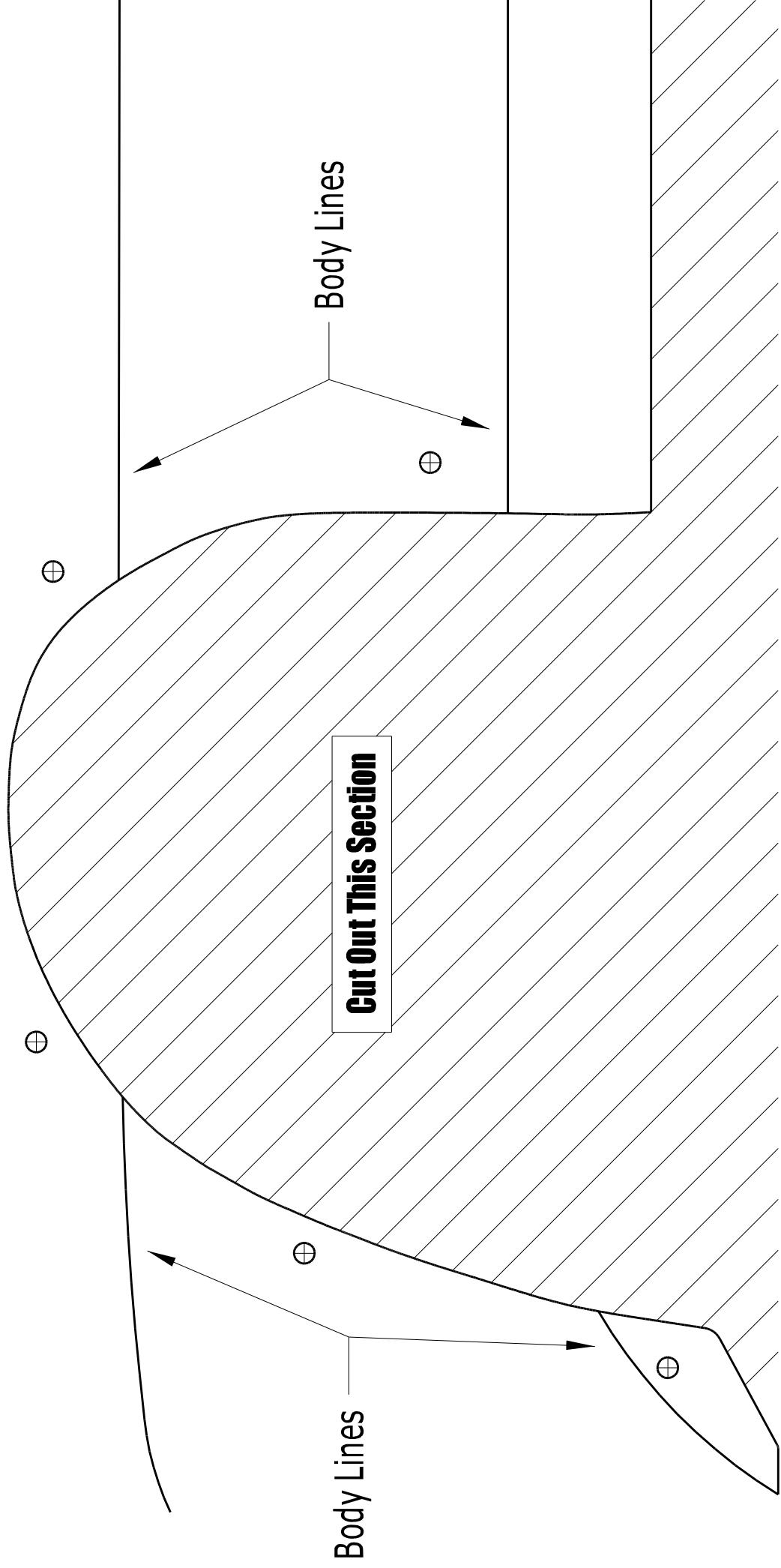
**STEP 19:** Lower vehicle and re-connect the negative battery cable.

**STEP 20:** Start vehicle and check for exhaust leaks.

**Techline (800) FORD788**

Factory Ford shop manuals are available from Helm Publications, 1-800-782-4356

# Rear Bumper Cover Cutout Template (LH) Drivers Side



Rear Bumper Cover Cutout Template  
(RH) Passenger Side

